

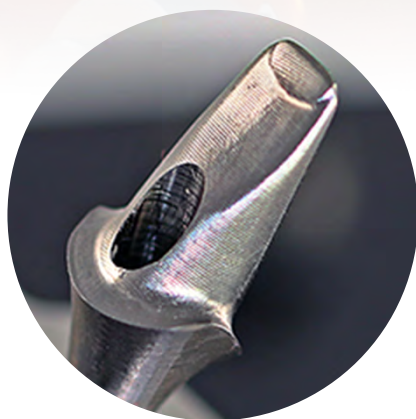


**SMALL-FORMAT INDUSTRIAL
QUALITY MACHINING CENTERS**

Don't let the small footprint fool you. Constructed utilizing the technology found in "full-frame" CNC industrial machines, the Versamill 5X-200 is designed to perform reliably with high precision for the long term.

This purpose-built, open source 5-axis mill is designed to provide owners with maximum flexibility and versatility in a dental manufacturing system. The Versamill 5X-200 can accept input from popular dental design programs and process virtually any dental milling materials including wax, zirconia, acrylic, composites, stainless steel, titanium, ceramics, titanium, cobalt-chrome and others.

With the versamill 5X200 you get a complete, industrial-quality manufacturing solution used by dental laboratories and milling centers around the world that is specifically designed to meet the demanding support requirements of dental laboratories & milling centers.



INDICATIONS

- Inlays, onlays, copings, crowns, veneers, splints & guides.
- Removable & fixed bridges, models, abutments & bar overdentures (with optional modules).
- Process PMMA, zirconia, PEEK composites glass-ceramic, resins, titanium, cobalt-chrome, and more.
- Block sizes up to 40mm.

SPEED WITHOUT SACRIFICE

The strength and rigidity of the Versamill 5X200 coupled with the undercut machining capability of full 5-Axis control provides perfect fits, great anatomic detail and the best possible restorative margins with faster cycle times and greater tool life.

- Single-unit zirconia crowns in less than 14 minutes.
- Single-unit glass-ceramic crowns in as little as 15 minutes.
- 6-implant zirconia implant bridges in less than 105 minutes.
- Titanium abutments in 20 minutes or less.

RIGID CONSTRUCTION

- Heavy, vibration absorbing cast aluminum-alloy frame.
- Zero-stack tolerance, 5-axis trunnion.
- Liner guides & ballscrews with preloaded bearings.
- Closed loop system with servo motors and position encoders assure smooth, quiet and accurate dynamic motion.





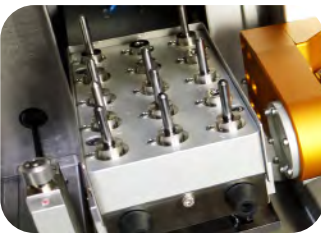
Powerful Spindle and Coolant Delivery.
Class-leading 3.0kW spindle with coolant delivery system that assures complete saturation of the machining area.



Heavy, cast aluminum-alloy frame provides the weight and rigidity required to absorb vibration and dissipate heat.



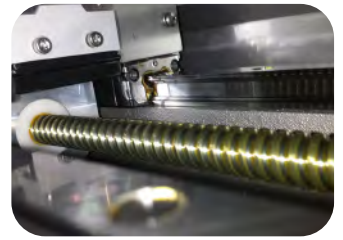
5-axis operation with quick-change universal fixture.
Rotary axis trunnion driven by high-torque reduction gears with fully supported zero stack tolerance quick-change part holding fixture.



15-station ATC houses sturdy, flex-resisting 6mm diameter cutting tools.
The spacious work area of the Versamill makes for easy operation and part handling.



Use of large-diameter precision ball screws with anti-backlash ball nuts along with linear guides and closed-loop servo drives assures superior dynamic motion and positional accuracy.



Quick-change 6-unit pre-form abutment cartridge.
Facilitates fast production of custom implant abutments from titanium pre-form blanks.



Quick-change 6-unit CAD-block cartridge.
Facilitates high production of lithium disilicate, Lava Ultimate and other pre-mounted dental materials.



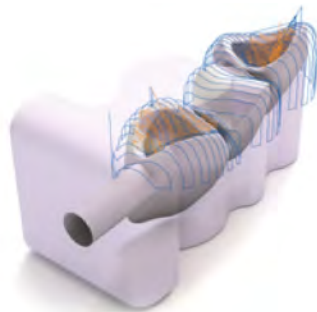
Heavy-duty Machine stand provides stability and storage while housing the cooling liquid filtration and delivery system. A separate, cabinet is provided to house the water-based filtration and delivery system.



CAM SOFTWARE: PROVEN & FULL-FEATURED

The Versamill 5X200 is powered by hyperDENT CAM software from FOLLOW-ME! Technology Group.

hyperDENT incorporates efficient proven milling cycles from the industrial segment to provide maximum process stability and indication quality, including patent-protected milling strategies used for complex materials ensuring perfect surface quality while maximizing tool life.



OPTIONAL MODULES

Full Denture, Template Generator

As with our Versamill machine technology, we leverage our 40 years of digital design and manufacturing experience - spanning all market segments including the dental industry - to provide additional software enhancements over and above a vendors' standard deliverable product. These unique enhancements, which are not available from any other supplier, provide additional functionality, while assuring unrivaled reliability and increased productivity.

Versamill 5X200 Specifications

Number of axes:		5 simultaneous
Travel (x, y, z axis):	(mm)	330 x 146x 145
A Rotational axis:	(degrees)	360 °
B Rotational axis:	(degrees)	±30 °
Drive Mechanism:		Ballscrew
Way System:		Linear Guide
Repeatability:	(µm)	±1.0
Spindle Power:	(watts)	AC 3.0kW max
Spindle Speed:	(rpm)	6,000 - 60,000
ATC number of tools:	6.0mm Ø	15
Axis Drive System	Closed-Loop	Servo Motor w/Encoder
Blank disc diameter:	(mm)	98 Ø
Machine size (W x H x L):	(mm)	743 x 827 x 1782
Table size (W x H x L):	(mm)	743 x 827 x 950
Weight:	(Kg)	405Kg
Input Power	(VAC/50-60Hz)	240 Single Phase